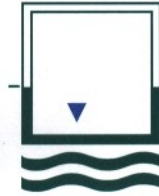


▼K100

–black, –brown



Cellar,
basements
and tanks



Product Description

▼K 100 protects basements, foundations and containers against pressing loads of water as well as intrusion of water from the surrounding soil. The product is particularly recommended as a protective coating for the different types of tanks which are exposed to natural substances aggressive to concrete (e. g. liquid manure). Due to the enormous elasticity of ▼K 100, new hair-line cracks are spanned - but not expansion joints! The emulsion is environmentally friendly as it contains no solvents.



Characteristics**Composition**

▼K 100 is a ready-mixed highly viscous emulsion of pure bitumen as well as latex and neoprene plastics. Fillers that could compensate for quality or performance are not contained in the product. The compound is environmentally friendly as it is solvent-free.

Features

Contrary to other emulsions, this emulsion dries from the inside out and as a result the drying process sets in rapidly and reliably. The coating is resistant to and will not be attacked by such biological substances contained in natural waste waters (e. g. liquid manure) that are aggressive to concrete. The dried coating - if applied thick enough - is so elastic that any hairline cracks and cracks due to shrinkage are spanned, even in the cold. Expansion joints cannot be spanned, however.

Strict adherence to the instructions is essential in order to ensure the superb durability of our products.

Areas of Application

▼K 100 protects against the intrusion of moisture from the surrounding soil (non-pressurized and pressurized water) making it suitable for a variety of applications in construction, civil engineering and hydraulic construction, such as basements, foundations or even containers. Because of its resistance to biological substances which may be contained in natural waste waters and are aggressive to concrete, we can recommend the product especially as a protective coating for concreted, resp. plastered tanks accumulating liquid manure or other liquid dung. It is suitable also as a sealant for new basement construction be it unmixed or in combination with ▼K 11-Slurry. The emulsion must be applied cold to the water side.

Combined Applications

For protruding base plates, foundation or concrete footing, a drain pipe needs to be set up using ▼Barrier-Mortar.

▼K 11 Slurry is suitable as an undercoating for ▼K 100 if sealing on the water side is required (e. g. basements, underground car parks, concreted structures, autoclaved aerated concrete blocks, porous concrete and other mineral footings). ▼K 100 is suitable as an undercoat for ▼SK 2000 membranes when dealing with damp surfaces.

Directions for Use**Prior to Application**

Get organized: 1 person can coat approx 50 qm per hour. ▼K 100 may be used starting at temperatures of +5 degrees Celsius.

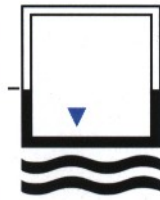
Tools, etc.: Spray gun, broom, paste brush or lambskin roller; for porous surfaces a brush as well. Furthermore: Protective clothing and gloves.

Calculate how much you will need: You will require approx. 1 kg per qm (2 layers) for protection against the moisture contained in soil; for pressing loads of water, 1.5 kg per qm (3 layers) are required. Prepare surface: Non-porous concrete or an area treated with cement render provide an ideal surface. The surface must be sound, for the most part level, free of voids, wide cracks, ridges, oil or grease. Cement slurry or loose parts must be dislodged by grinding or by using a steel brush. Round off edges and grooves. For protruding base plates, foundation or concrete footing, set up a drip using ▼Barrier-Mortar.

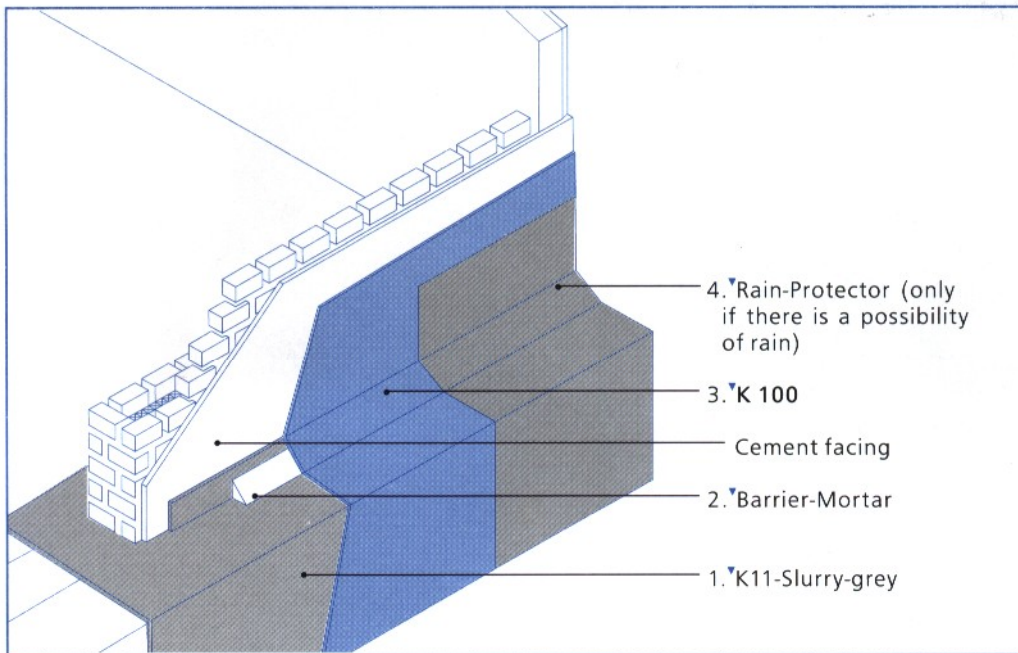
▼K 100 is not suitable as a sealant on the negative water side.

For fully jointed brickwork, we recommend an undercoating with ▼K 11-Slurry grey before ▼K 100 is applied.

The temperature may not at any time during application and drying drop below +5 degrees Celsius. Also, consider the danger of night frost!

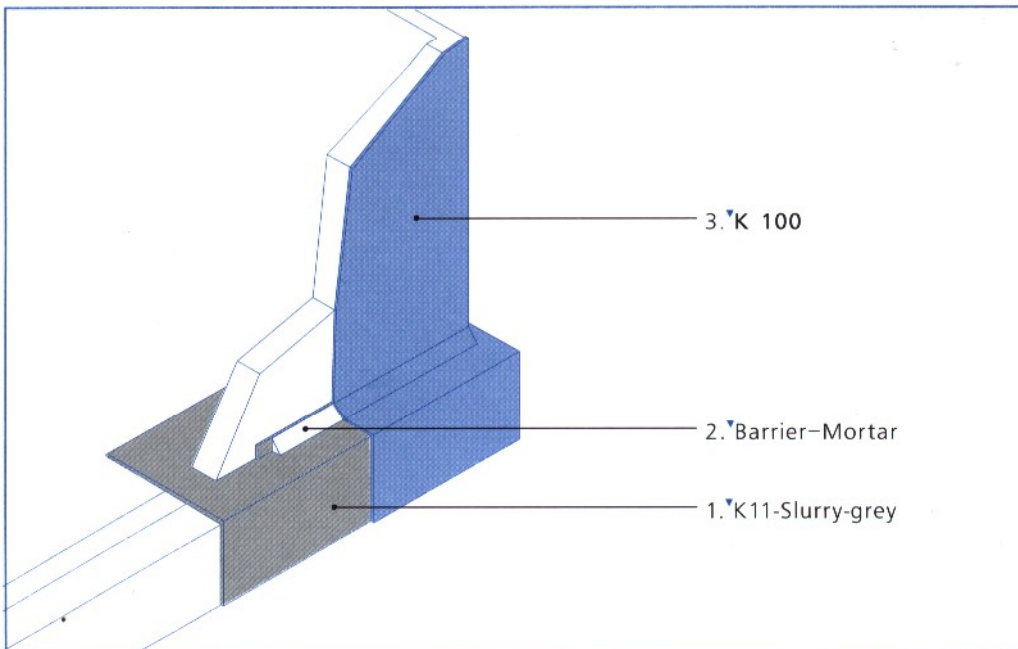


Cellar,
basements
and tanks



Left illustration:

Exterior waterproofing of a surface plastered with cement mortar using ▼K 100.



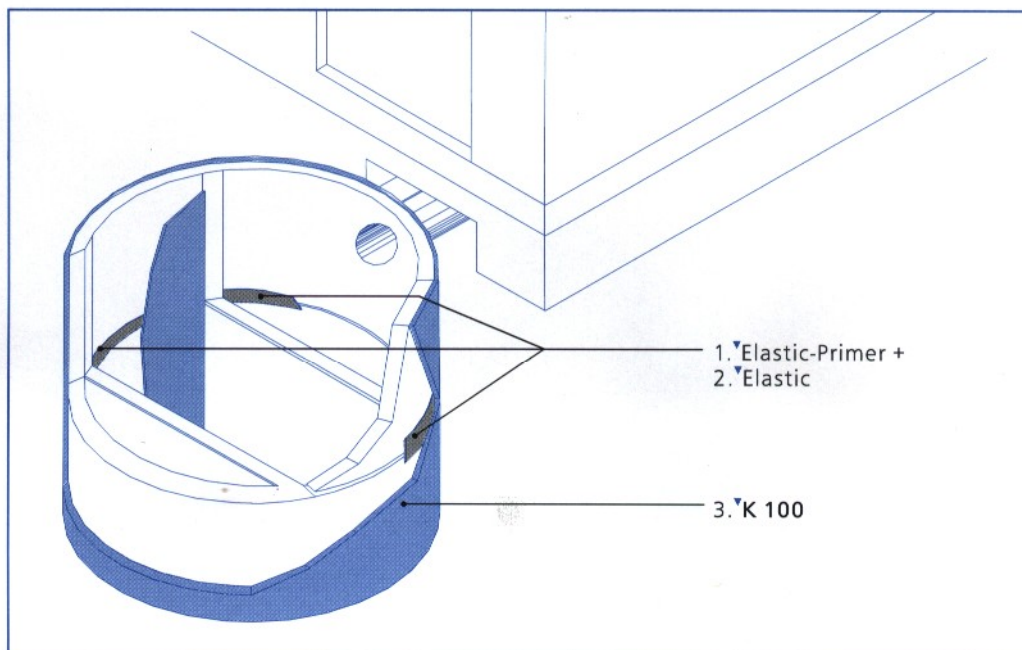
Left illustration:

Exterior waterproofing on concrete walls with ▼K 100.

Working Steps

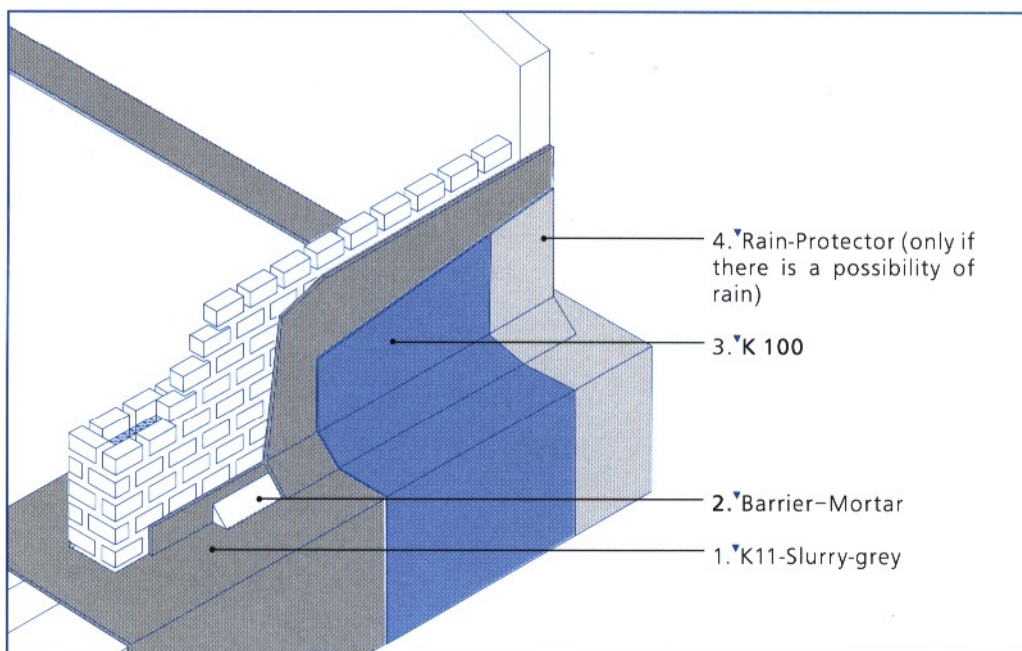
1. Slightly pre-wet the surface (i. e. with spray gun). Wipe off soaked areas or standing water.
2. Apply first coating: ▼K 100 is applied cold with a broom, roller or paste brush. We suggest using a brush for aerated surfaces so that the first coating bonds well.
3. Control coating: The coat must be applied uniformly, covering all areas. Before the following layer is applied, use your wetted finger to check if the coating still runs. Apply the next layer only when this is no longer the case.
4. Apply subsequent coats: If the surface is to be protected against non-pressurized water, 2 layers will suffice; for protection against pressurized water you will need 3 layers.

In order to ensure that the coating is applied evenly, we recommend alternating ▼K100-black with reddish brown. Thus, the 1. and 3. coating could be black while the 2. coat is red.



Right illustration:
Waterproofing of waste water or liquid manure containers with ▼K 100.

Right illustration:
Exterior waterproofing on brickwork with flush joints or on autoclaved aerated concrete with ▼K 11-Slurry-grey and ▼K 100.



After Application

Cleaning: Rinse off tools and dirty areas immediately with water. Clean hardened residues with ▼Epoxan-Cleaner. **Setting period:** The drying time depends on the absorbency of the surface, the humidity and the pulsation of air; generally, it takes 1 - 2 days. **Breaking Strength:** After drying, the coating has developed load stability, it should not be walked on though.

During application and drying, it is mandatory that the coating be protected against rain with ▼Rain Protector.



Cellar,
basements
and tanks

Please refer to the information on the packaging as well.

Handling of ▼K 100 is recognized as safe (non-hazardous material acc. to GefStoffV).

Packaging, Storage and Disposal

Packaging: 10 kg and 30 kg tin plate hobbocks with plastic handles (PE)

Colour: black or reddish brown

Shelf life: ▼K 100 can be stored in its original container for a period of two years after delivery without any losses in quality (see date of delivery on package). The product must be stored in a dry area and at temperatures of at least +6 degrees Celsius. Protect against frost!

Delivery: Ex works or via our outside warehouses.

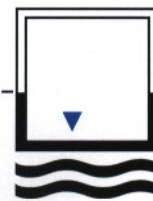
Disposal: Packaging and dried material may be disposed via domestic garbage.

Any more Questions? Please direct these to our sales staff or to our Technical Advisory Service in the Wiesmoor plant: (010 49) 49 44 302-0.

All of the information provided has been compiled to the best of our knowledge. We recommend that the suitability of our products be ascertained prior to application by means of matching the treatment to the individual conditions and testing the product if necessary. Liabilities cannot be derived from this technical information. Our general sales, delivery and payment conditions are valid.



Deutsche HEY'DI
Chemische Baustoffe GmbH
Pollerstraße 161-167
D-26639 Wiesmoor
Telefon: (0 49 44) 3 02-0
Telefax: (0 49 44) 3 02 25
Telex: 2 74 38

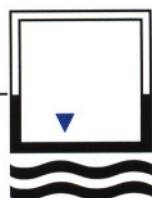


Cellar,
basements
and tanks

Product description	
Application	▼K100 protects against the intrusion of moisture from the surrounding soil (non-pressurized and pressurized water) making it suitable for a variety of applications in construction, civil engineering and hydraulic construction, such as basements, foundations or even containers. Because of its resistance to biological substances which may be contained in natural waste waters and are aggressive to concrete, we can recommend the product especially as a protective coating for concreted, or plastered tanks accumulating liquid manure or other liquid dung. It is suitable also as a sealant for new basement construction – be it unmixed or in combination with ▼K11–Slurry. The emulsion must be applied cold to the water side. It can be applied also as a primer on damp surfaces for ▼SK2000 Waterproofing Membranes.
Composition	▼K100 is a ready-mixed highly viscous emulsion consisting of pure bitumen as well as latex and neoprene plastics. Fillers that could lower the quality or performance are not contained in the product. The compound is environmentally friendly as it is free of solvents.
Features	Contrary to other emulsions, this emulsion dries from the inside out and as a result the drying process sets in rapidly and reliably. The coating is resistant to and will not be attacked by such biological substances contained in natural waste waters (e. g. liquid manure) that are aggressive to concrete. The dried coating – if applied thick enough – is so elastic that any hairline cracks and cracks due to shrinkage are spanned, even in cold weather. Expansion joints cannot be spanned, however.

Specifications for application	
Setting	generally 1 – 2 days
Working protection	corresponding workwear and gloves
Working time	1 person needs approx. 1 hour to cover 50 qm
Type of application	spreading
Thickness of coating	approx. 0.53 mm for 1 kg of coating per qm
No. of coating required	2 coats against moisture from the surrounding soil, 3 coats against pressing water
Warranty	5 years according to Civil Code
Control	Layers must cover all areas evenly. Prior to applying the following layer, use your wetted finger to ensure that the coating no longer runs but that it is still tacky. Continue with the application only then. Do not let the previous layer dry out completely.
No. of persons required	1
Subsequent treatment	Can be coated with ▼SK–Coating and all products that bond with bituminous substrates and that are compatible with bitumen.
Alternatives to product	▼Styro–Thick–Coating, ▼SK–Coating ▼SK 2000
Treatment of surface	Pre-wet lightly, for protruding base plates, set up a drip using ▼Barrier–Mortar.
Characteristics of surface	The substrate must have full mortar joints, concrete must be non-porous
Working temperature	starting at +5 degrees Celsius
Consumption	2 coats: 1 kg per qm. 3 coats: 1.5 kg per qm
Tools	spray gun; paste brush, brush, broom or roller; possibly brush
Cleaning of tools	use water immediately after use; once dried, clean with ▼Epoxan–Cleaner
Special comments	Protect against frost and rain during application and drying time.

▼ K 100



Cellar,
basements
and tanks

Biological/chemical/physical data	
Basis	Caoutchuc-bitumen emulsion
Safety for walking	Fire classification B 2
Density	1.1
Resistance to frost and de-icing salt	given
Consistency	viscous
Conductibility	non-conductive
Solvent	none
Shrinkage	0
Subsequent applications	with ▼SK-Coating
Viscosity	3.500 – 5.000 mPaBs
Vapour diffusion factor	μ 25.000 – 30.000
Additives	possibly water

Purchase/order/information	
Contact	Please refer to our sales staff or to our Technical Advisory Service in the Wiesmoor plant: (0 10 49) 49 44 3 02-0.
Item no.	1203 (10 kg), 1207 (30 kg)
Supplier	various outside warehouses and straight from the plant
Disposal	hardened, domestic garbage
Packaging	10 kg and 30 kg tin plate hobbocks
Shelf life	▼K 100 can be stored in original containers for a period of 2 years without any losses in quality (see date of delivery on packing slip). The material must be stored in a dry area, however, and at temperatures of at least +6 degrees Celsius. Keep away from frost!

Test certificates Official institution for material inspection for stones and soils, Clausthal-Zellerfeld: Test on water impermeability, test on crack spanning, test on flexibility in the cold, test on resistance to liquid manure.



® Deutsche HEY'DI
Chemische Baustoffe GmbH
Pollerstraße 161-167
D-26639 Wiesmoor
Telefon: (0 49 44) 3 02-0
Telefax: (0 49 44) 3 02 25
Tele: 07422